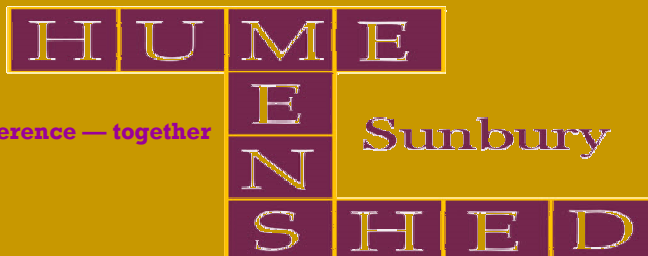


February
2024

Making friends, making a difference — together



Shedders News



Garry passed away on the 25th. January 2024.



At a meeting in middle of 2010 Reverend Milton Oliver of Compassion North convened a meeting with Garry Pettit, Ian Baird, Trevor Dunn, Fred Lupson and Peter Rankin to start the ball rolling. On the 12th October an Interim Steering Committee was formed and Garry was appointed president.

Since then, Garry had been very involved in the shed. He made countless sets of children table and chairs, which were sold or donated to the community. He had special setups to make the table and chairs both at the shed and his home garage.

In 2018 he was the first recipient of the Hume Mens Shed Sunbury Life Membership.

Garry will be missed and our condolences go to his wife Janice and family

Using Shed Material and Equipment for personal use? Don't forget to make a donation

President Report

February 2024



On Tuesday the 6th February with great sadness a significant number of Shed Members joined with family and friends to farewell Garry Pettit (Foundation President of the Hume Mens Shed Sunbury). The honor guard provided was greatly appreciated and highlighted how much Garry was liked and appreciated by the members.

On a lighter note it is good to see everyone has returned from the Xmas break revitalized and ready to take on the challenges of the new year.

The Winslow Boardroom table continues to evolve, there appears to be a need for more nativity sets, the outside bench seats are taking shape as are the wicking beds in the garden. There a number of orders for children's table and chairs as well as several repair jobs. The lean too next to the container is to be dismantled and replaced with an outdoor seating area dedicated to the Millett families generosity. The Bridgeport Milling machine is taking shape and will hopefully be commissioned in the not to distant future.

All in all we have hit the new year running. Make this the year that you get more involved in the projects upcoming and underway.

We were also please that Jimmy Moffat secured a \$1,000 donation from Sunbury Car Wash. Sunbury Car Wash has been supporting the shed for a long time by providing car-wash tokens on a regular basis.

Don't wait to be asked to volunteer, offer to volunteer

CRACK THE CODE



6	5	0	1
4	8	9	1
0	2	5	3
9	5	3	0
5	4	6	9

One number is correct, and well places

One number is correct, and well places

Three numbers are correct,
one is correctly placed

Two numbers are correct,
But wrongly placed
Two are wrongly places

Nothing is correct

?	?	?	?
---	---	---	---

Answer next issue of Newsletter

MICROWAVE, SEASONING FOR WOODTURNING

So you want to microwave wood

You can dry almost any type of wood in a microwave as long as it is small enough to fit. While kindling is too large, pieces of craft wood are ideal for microwave drying. Dry green wood fresh from the tree to prepare it for turning and working. Or, use the microwave to reduce the moisture content of craft wood to keep it from shrinking and cracking as it ages.

Step 1

Set the microwave on its lowest setting. On most microwaves, this is "defrost" or lower. Whatever your microwave's settings, choose one that runs on roughly 200 to 360 watts.

Step 2

Place the wood on the outer edge of the carousel plate so that it rotates around the cavity of the microwave. Place two to three paper towels underneath the wood to absorb the moisture the wood gives off as it dries. You may place more than one piece of wood in the microwave at a time as long as they fit on the outer edge of the carousel and none of the pieces touch each other (touching pieces may ignite).

Step 3

Microwave the wood for 1 to 1 1/2 minutes. Never leave the wood unattended while it is drying. If you notice smoke, stop the microwave immediately.

Step 4

Remove the wood from the microwave with oven mitts or heavy work gloves. Place the wood on the counter to release the steam.

STEP 5

Lift the wood off of the counter after 30 seconds to check the amount of condensation underneath the wood. Then allow it to cool to room temperature and to release the moisture removed by the microwave.

STEP 6

Repeat until little the wood produces little condensation while it cools down to room temperature. Do not try to nuke away all of the condensation. If the wood is too dry, it may smoulder or ignite.

WARNING

Do not increase the heat in an attempt to dry the wood faster. You may burn the wood. If a piece of wood catches on fire, submerge it or leave it outside until it burns out. Do not place smoldering or flaming wood in the trash can.

**Put the elderly in Prison**

We should put the elderly in prison
 Because they will get a shower every day,
 Video surveillance in case of problems,
 3 meals every day, access to the library,
 Computers, Tv, gym, doctors on site,
 And free medication if needed

Put criminals in case homes

And they'll get

Cold meals, lights out at 7pm,
 2 shows a week, live in a smaller room
 And pay rent at \$2,000 a month!!

It's pretty sad that we treat prisoners
 Better then the elderly

Extract of Minutes of meeting 167 Tuesday 20th February 2024

9.30am

Minutes of previous meetings

Moved Andrew Seconded Stephen Carried

Correspondence

39 pieces of correspondence were dealt with including

37/ Bunnings Sausage sizzle Anzac Day **yes**

New Members/ Membership renewal

Garry Stone Accepted

General Business

1/ Insurance is due by end of February, Increase equipment to \$200,000 with a review once all equipment has been valued. \$28.50 per member for insurance, shed to subsidise \$3.50 per member.

Total insurance fees collected from member \$1978

Insurance premium \$28.50 per member total \$2565

Insurance equipment \$896.81

Members insurance premium for 24/25 to remain at \$25

2/ Mental Health accreditation renewal course Pete, Ted, Ian Lupson, Ian Phillips. Sarah Lungu has offered to do the course for \$800. Shed to apply for AMSA Grant -if grant is not successful than shed to fund the \$800, comprising of \$600 received from City of Hume and \$200 from our funds.

3/ Honour Board update To be completed by August 2nd to celebrate our 10 years President, Secretary, Treasurer and Life Members

4/ Review of members, do we have correct mix of activities, we seem to getting more white-collar members now.

Discussed and felt that membership is open to all, it was thought that a lot of white-collar workers enjoyed new experiences with making things.

5/ Garden relocation update. Big bed to be shifted and downsized and made into a wicker bed. Milne Matthews was acknowledged for his great work in making the 2 wicker beds installed.

6/ Purchase of new lathe

Nova Neptune 15" Benchtop Lathe \$2249

Nova Neptune 15" on stand \$2849 bed extension \$359

Motor warranty 10 years, Electronic warranty 5 years

Future wish list

Crown chisels – Narrow parting tool \$80, Side grind bowl gauge \$139, Rouching Gauge \$150 and Bowls gauge \$150

To be reviewed once all other machinery has been sold. Put on 5 year plan at April meeting

7/ Ratify Safeguarding Vulnerable People Policy

8/ Sale of redundant saw and thicknesser, set sale pricing for either another mens shed or for general sale.

Committee members to have a close look at the price to sell them to either another shed, club members and Facebook.

Update on the purchase of a second large vacuum cleaner. Grant approved awaiting funds to arrive in account. Possibly also look at purchasing from AEG

9/ Mailchimp Bulk email. Free package to be accepted with one month free support. Reconsider later whether to pay \$30 per month for ongoing support.

10/ Blower for inside and outside shed. Authorised to purchase AEC blower for \$300

11/ Retractable cover for Millett corner. Kevin Swaffield to further investigate and purchase with a limit of \$2500 including the 12v power supply.

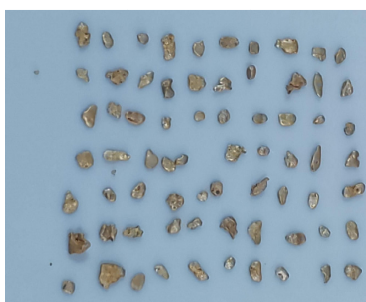
12/ Sign to be made for the Millett's members corner, to be known as Millett's Rest

Who wants to go and find Gold

Hi, This is Greg Shoemsmith I am a member of the Sunbury Hume Mens Shed, I participate in Gold prospecting all around Victoria at the Golden triangle and other gold areas.

I have been prospecting for about 3 years, and was introduced to this by a mate and we now have our own UTube channel Called “**GRA8 Gold Adventures**” . We try and go out once a week and try and find that elusive golden rock. Its exciting And adventures so you just don't know what you will find, your out in the bush, away from the hustle and stress from home duties and out in the fresh air. I am here at the shed to give the bloke's any information that they need to know,

If you want to know where to go, see Greg, pay over some cash and he will tell you where to go



Another load of timber that needs to be cut up for the SES

COMPASSION NORTH



"People matter - so, we'll never stop caring."

STAY SAFE, STAY HEALTHY



Have you looked at our web page lately??

<https://sunburymensshed.com>

The web site is constantly being updated and suggestions are very welcome.

Pages on the site include;

All the Newsletters

Photo Gallery

Contacts and links etc etc

 **Aussie
Broadband**
Bloody Good Broadband

powered by
nbn 

 **Aussie
Broadband**
Bloody Good Broadband

powered by
nbn 

 **Aussie
Broadband**
Bloody Good Broadband

powered by
nbn 

Sustainable Energy Projects and Consulting



REGENERATE ENGINEERING

SUNBURY
BASED

PROFESSIONAL ENGINEERS *supporting*
HMSS

CONTACT US

RESIDENTIAL SOLAR PV ENERGY,

RESIDENTIAL BATTERIES

Special rates for members, family and friends

GREEN FINANCING AVAILABLE

COMMERCIAL LIGHTING RETROFIT



elite

TYRE & AUTOCARE

Phone: 9744 5006

New and used tyres from \$25 – Repairs from \$15

100 Horne St, Sunbury 3429

elite_tyres@outlook.com

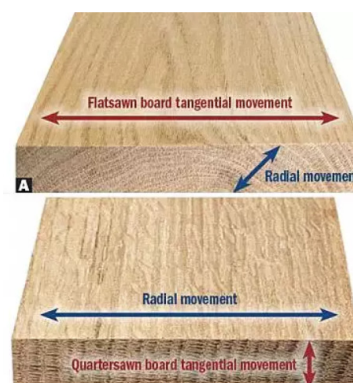
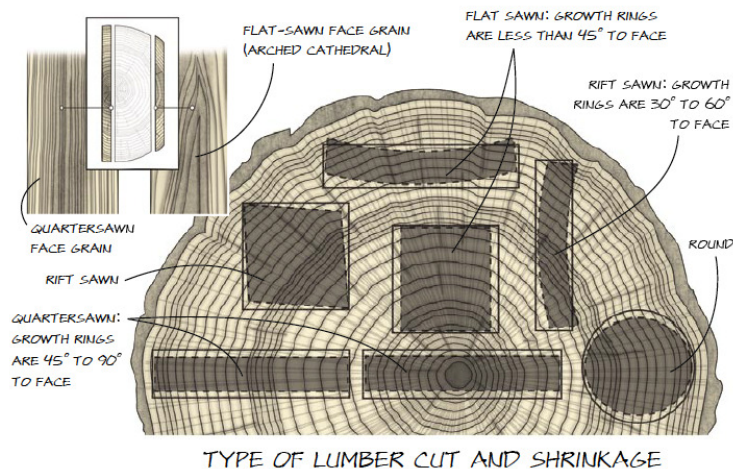
Wheel alignments

Car, 4X4, truck, bobcat, forklift and tractor repairs

EXPANSION, CONTRACTION OF TIMBER

If you work with manufactured boards only, such as plywood or MDF, wood movement is probably not a concern for you in building furniture that lasts. Solid wood will however move forever and one must find

ways to
cope with
this.



Step 1. Measure the board's width.

- Know that wider boards expand and contracts more than narrow ones
- Wood expands and contracts mostly across its width

Step 2: Find the average yearly change in moisture content.

- Wet air expands wood, dry air shrinks it.
- Use a moisture meter to note the highest moisture content (MC) in your wet season and the lowest in your dry season.
- Subtract the smaller number from the larger one to find the yearly change. Most climate-controlled houses change 3 percent to 4 percent MC during a year.

Step 3: Determine the dimensional change coefficient of the species.

- Dimensional Change Coefficient::A number that reflects how much a certain species of wood will change in width.
- Formula works only when wood is between 6 percent and 14 percent moisture, but this is a fair range for furniture.
- First, determine if your board is mostly flatsawn (F/S) or quartersawn (Q/S). Few boards are entirely one or the other, so make a best guess. The best place to look is in the end grain (see drawing at right).

- Now look up the right number in the chart of common species.

Step 4: Do the math.

- Multiply the width of the board (in inches) by the annual change in MC (highest annual MC minus lowest). Then multiply the result by the number from the chart.

HARDWOODS			SOFTWOODS		
Q/S	F/S		Q/S	F/S	
ALDER, RED	.00181	.00156	BALD CYPRESS	.00190	.00195
ASH, WHITE	.00169	.00174	CEDAR, EASTERN RED	.00106	.00162
BEECH, AMERICAN	.00190	.00151	DOUGLAS-FIR, COAST	.00165	.00167
BIRCH, YELLOW	.00156	.00158	HICKORY, WESTERN	.00194	.00174
CHERRY, BLACK	.00156	.00198	PINE, EASTERN WHITE	.00171	.00102
HICKORY, TRUE	.00159	.00111	PINE, LOST RIVER	.00140	.00194
MAPLE, RED	.00157	.00189	PINE, SLASH	.00187	.00167
MAPLE, SILVER	.00102	.00152	PINE, SUGAR	.00099	.00194
MAPLE, SUGAR	.00165	.00155	PINE, WESTERN WHITE	.00191	.00159
OAK, RED	.00188	.00169	PINE, YELLOW	.00176	.00165
OAK, WHITE	.00180	.00166	REDWOOD	.00101	.00129
WALNUT, BLACK	.00190	.00174	SPRUCE, SITKA	.00140	.00165
YEW, YELLOW	.00150	.00189	SPRUCE, WHITE	.00150	.00174

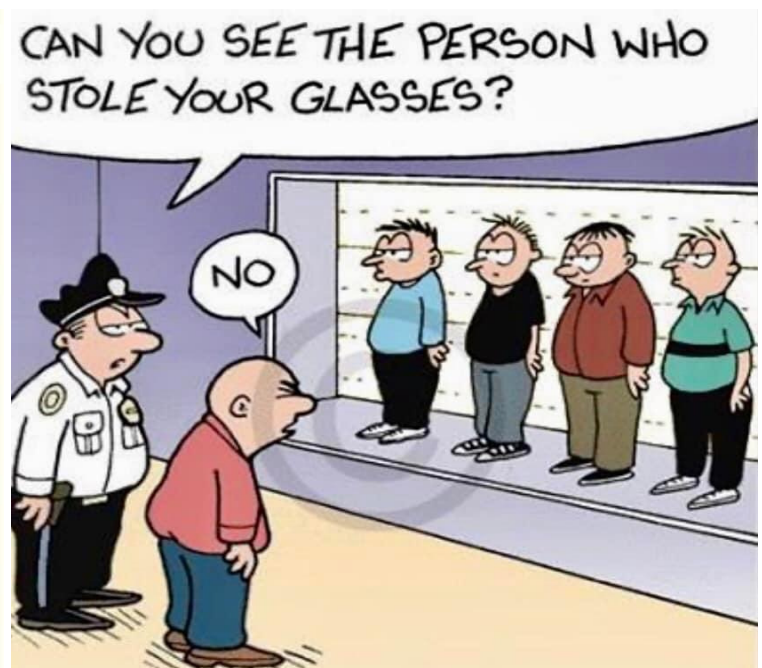
SOURCE: WOOD HANDBOOK, FOREST PRODUCTS LABORATORY, U.S. DEPARTMENT OF AGRICULTURE

Example: The workbench in this issue is 24" wide. The annual change in moisture in our shop is 3 percentage points (12 percent minus 9 percent). The top is mostly Q/S yellow pine (the numbers from the chart are .00176 and .00263).

So our equations are:

$$Q/S: 24 \times 3 \times .00176 = .127" \text{ (about } 1/8")$$

$$F/S: 24 \times 3 \times .00263 = .189" \text{ (about } 3/16")$$



Birthday's for the month of January, Febuary

Kevin Wood

Dieter Jankovic

Nicolas Gemno

Dennis Bannan

Ron Moysey

Natale Perri

Wayne Tanner

Ian Lupson

Jon Fettes

Geoffrey Moulder

Andrew Wilson



New Sheddy for the month of January/Febuary

Garry Stone



Morris, an 82 year-old man, went to the doctor to get a physical.

A few days later, the doctor saw Morris walking down the street with a gorgeous young woman on his arm.

A couple of days later, the doctor spoke to Morris and said: "You're really doing great, aren't you?"

Morris replied: "Just doing what you said, Doc. Get a hot mamma and be cheerful."

The doctor said: "I didn't say that. I said, You've got a heart murmur - be careful."

Contact List

President	Dale Wilkes
Vice President	Ian Phillips
Secretary	Albert Achterberg
Assistant Secretary	David Balfour
Treasurer	Peter Canning
Assistant Treasurer	Nic Germano
General Committee	Ted Riley
General Committee	Kevin Wood
General Committee	Kevin Swaffield
General Committee	Andrew Tait
General Committee	Stephen King
Woodwork Coordinator	Peter Hobbs
Woodwork Coordinator	Fred Parnis
Woodwork Coordinator	Barry Kelly
OHS Assistant	Barry Kelly
Editor	Norm Ripp
Sponsorship	Jim Moffat
Grants	Andrew Wilson
Electrical Maintenance	Kevin Wood
Garden Area	Barry Burbridge
Metal Fabrication...(Fitting & turning)	Trevor Dunn



Shed Details

This Newsletter is produced by Hume Men's Shed (Sunbury) Inc.

158 Evans Street Sunbury, 3429,

- *Email: mensshedsunbury@gmail.com*
- *Website: www.sunburymensshed.com*

Phone No is 0459266840



2023/2024 COMMITTEE



Secretary

Albert Achterberg



President

Dale Wilkes



Treasurer

Peter Canning



Ass. Secretary

David Balfour



Ass. Treasurer

Nic Germano



Vice President

Ian Phillips



Gen. Committee

Kevin Woods



Gen. Committee

Ted Riley



Gen. Committee

Kevin Swaffield



Gen. Committee

Stephen King



Gen. Committee

Andrew Tait



Ex Officio

Milton Oliver

Sunbury Men's Shed
Proudly Acknowledge
Supporters for 2023/2024



REGENERATE ENGINEERING
BUNNINGS SUNBURY
AUSSIE BROADBAND
CITY OF HUME
JOSH BULL MP
COMPASSION NORTH
KFC
NEXTRA SUNBURY NEWSAGENCY
ELITE TYRES
SUNBURY CAR WASH

Advertising/Sponsors

If you are a business that wishes to advertise or promote its service(s) or products, please contact us.

We have a Sponsorship Package which may suit you.

HUME MENS SHED SUNBURY IS A MEMBER OF



Australian Men's Shed Association
SHOULDER TO SHOULDER